

MARTINETTI MECCANICI

NUOVA SERIE CHS 6 | 7 | 8

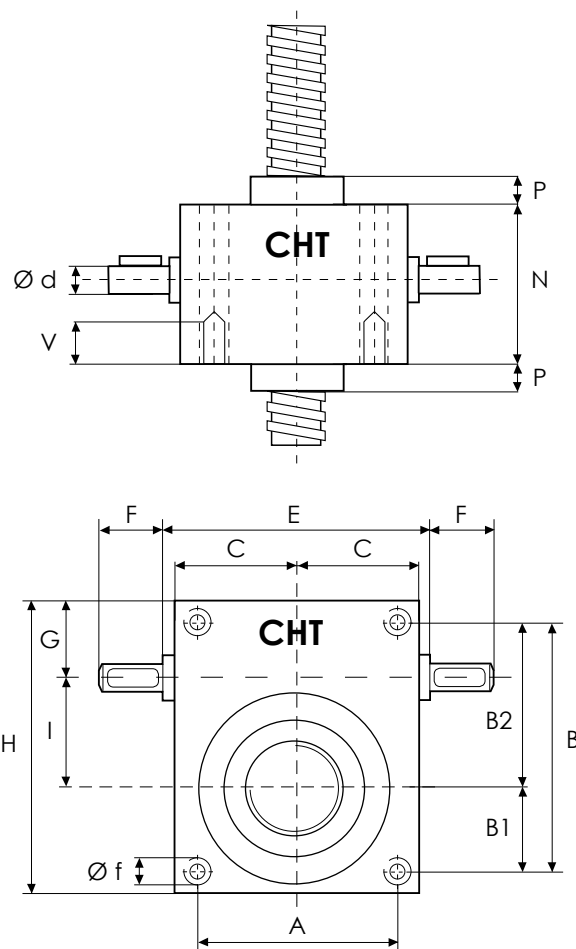


SERIE CHS 6 TS · VITE TRASLANTE

GRANDEZZA MARTINETTO

CHS 6

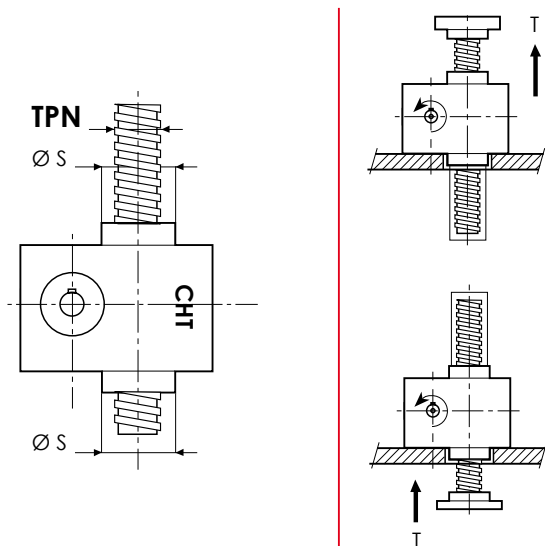
PORTATA	daN (Kg)	15000
VITE TPN	DIAMETRO mm PASSO mm	60 9
RIDUZIONE	VELOCE NORMALE LENTA	5:1 10:1 30:1
CORSA VITE PER GIRO mm	VELOCE NORMALE LENTA	1,80 0,90 0,30
RENDIMENTO	VELOCE NORMALE LENTA	19,3% 18,0% 16,5%
PESO MARTINETTO (Kg)		29
PESO VITE TPN X 100 mm (Kg)		2
MATERIALE CASSA		G25
QUANTITA' LUBRIFICANTE (Kg)		1
TIPO LUBRIFICANTE	AGIP GR MU EP2	
TEMPERATURA ESERCIZIO	-5° C +80° C	



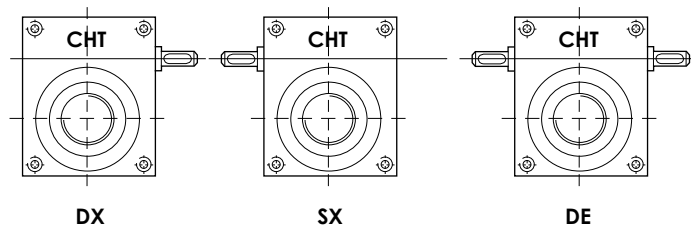
VITE TRASLANTE

00

SERIE CHS 6 TS - 15000 daN · TPN 60x9

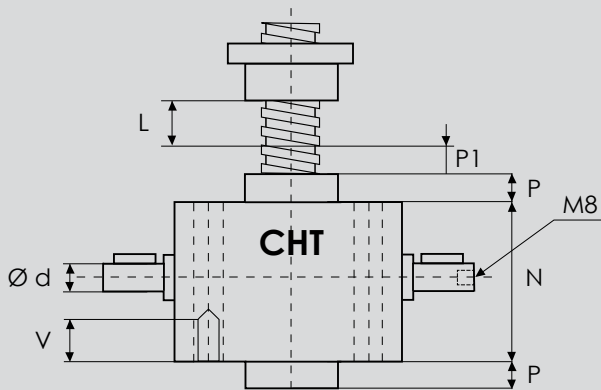


	A	B	B1	B2	C	E	F	G	H
CHS6	134	175	60	115	87,5	-	47,5	68	216
	I	N	P	P1	V	Ø d	Ø f	Ø s	TPN
CHS6	70	150	40	25	40	25	M20	90	60x9

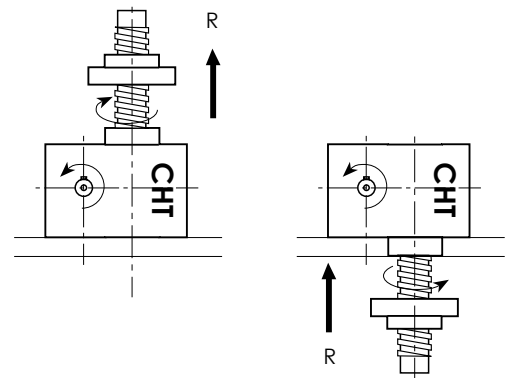
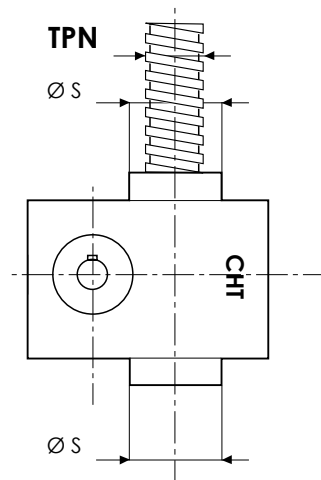
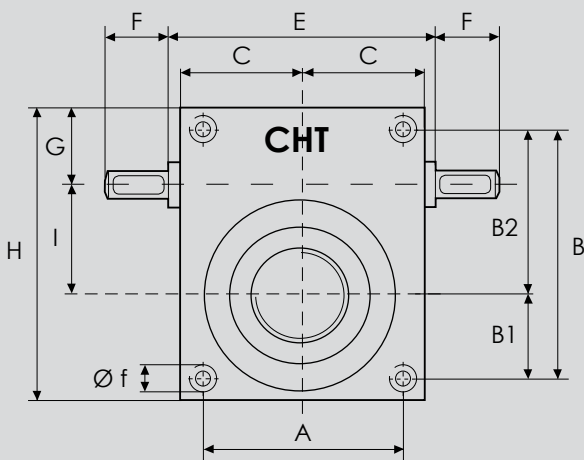




SERIE CHS 6 RS · VITE ROTANTE



L = CORSA

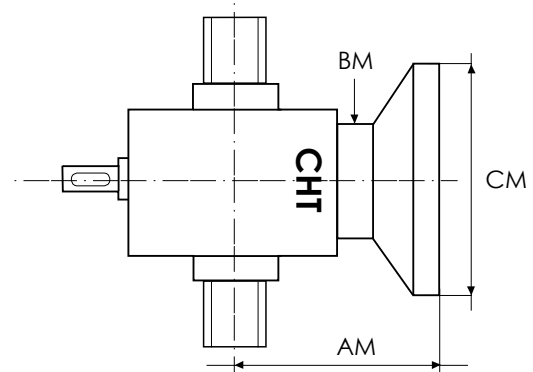
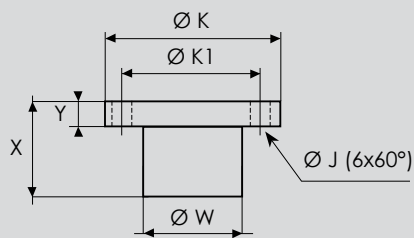


00

VITE ROTANTE

DIMENSIONI PAM FLANGIA CORTA

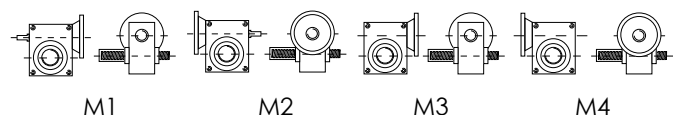
CHIOCCIOLA IN BRONZO



MOTORE	TIPO FLANGIA	CM	AM	BM
GR. 80	B5	200	140	108
	B14	120		
GR. 90	B5	200	140	108
	B14	140		
GR. 100/112	B5	250	140	108
	B14	160		

	X	Y	ØW	ØK	ØK1	ØJ
CHS6	120	25	80	110	92	10,5

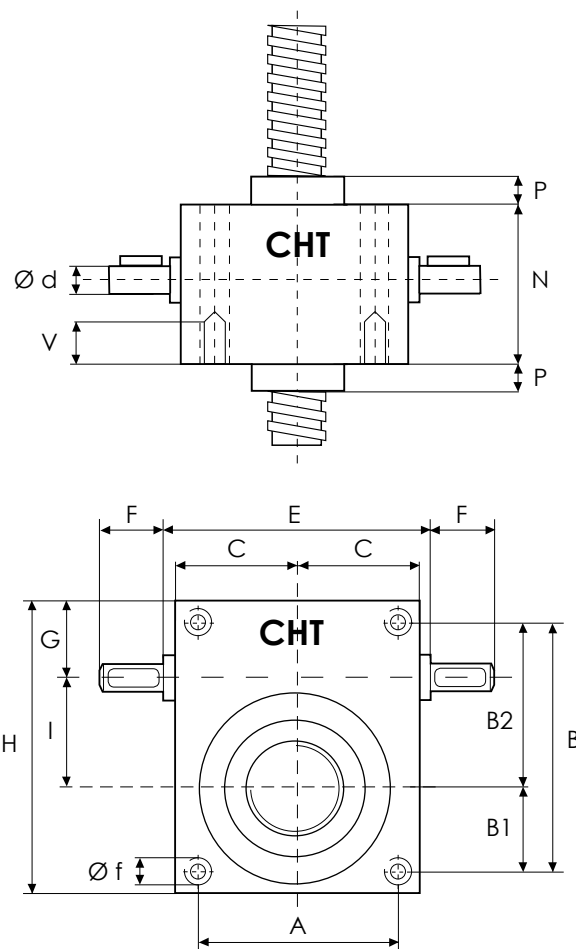
CONFIGURAZIONI





SERIE CHS 7 TS · VITE TRASLANTE

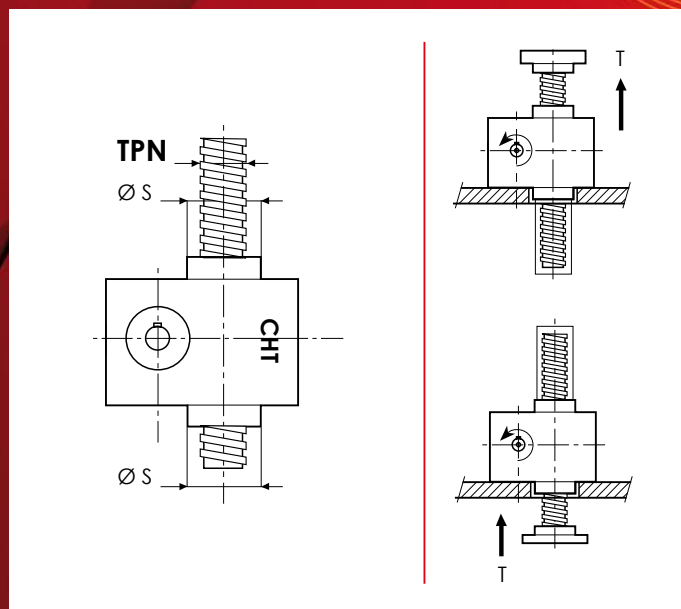
GRANDEZZA MARTINETTO		CHS 7
PORTATA	daN (Kg)	20000
VITE TPN	DIAMETRO mm PASSO mm	70 10
RIDUZIONE	VELOCE NORMALE LENTA	5:1 10:1 30:1
CORSA VITE PER GIRO mm	VELOCE NORMALE LENTA	2 1 0,33
RENDIMENTO	VELOCE NORMALE LENTA	18,5% 17,5% 16%
PESO MARTINETTO (Kg)		54
PESO VITE TPN X 100 mm (Kg)		2,8
MATERIALE CASSA		G25
QUANTITA' LUBRIFICANTE (Kg)		1,5
TIPO LUBRIFICANTE	AGIP GR MU EP2	
TEMPERATURA ESERCIZIO	-5° C +80° C	



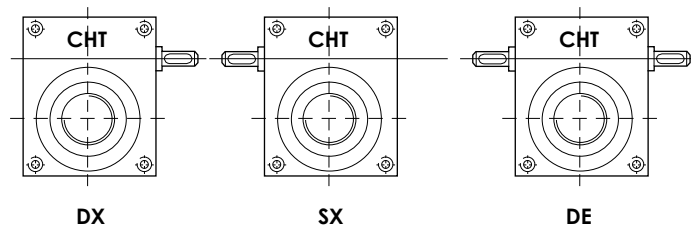
VITE TRASLANTE

00

SERIE CHS 7 TS - 20000 daN · TPN 70x10

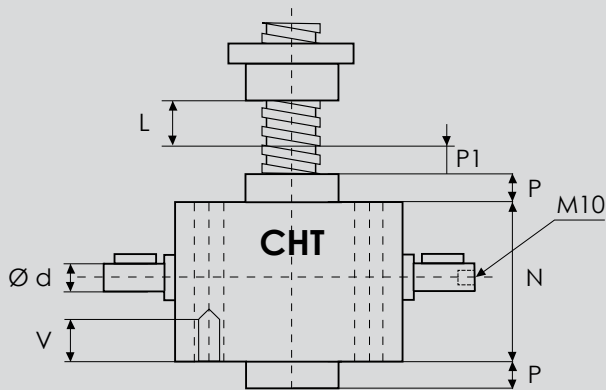


	A	B	B1	B2	C	E	F	G	H
CHS7	180	230	90	140	116	-	60	76	282
	I	N	P	P1	V	Ø d	Ø f	Ø s	TPN
CHS7	90	176	40	30	45	30	M30	120	70x10

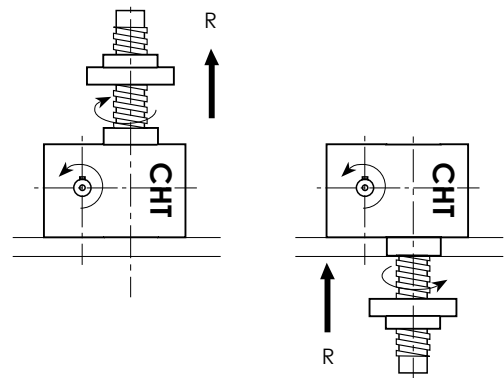
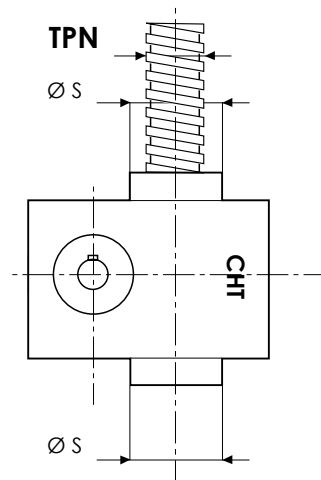
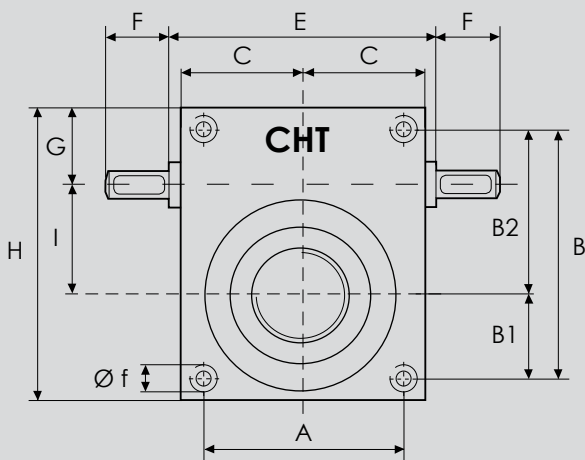




SERIE CHS 7 RS · VITE ROTANTE



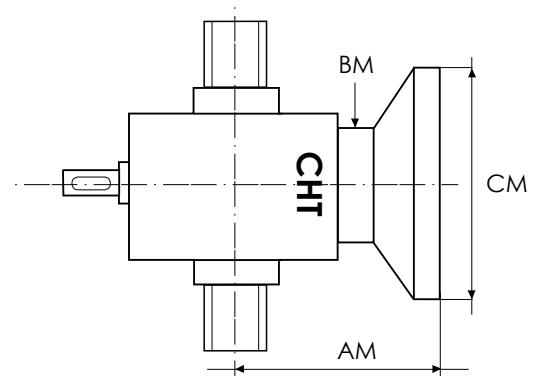
L = CORSA



00

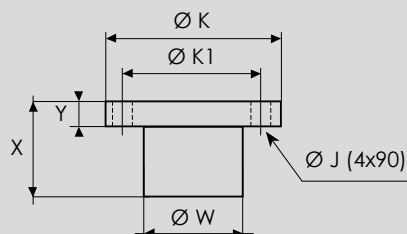
VITE ROTANTE

DIMENSIONI PAM FLANGIA CORTA



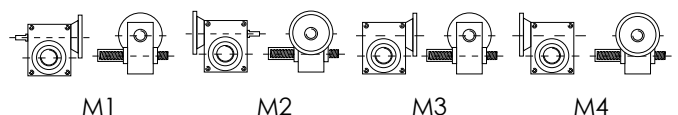
MOTORE	TIPO FLANGIA	CM	AM	BM
GR. 90	B5	200		
GR. 100/112	B5	250	200	130
	B14	160		
GR. 132	B5	300		
	B14	200		

CHIOCCIOLA IN BRONZO



	X	Y	ØW	ØK	ØK1	ØJ
CHS7	105	30	100	180	140	18

CONFIGURAZIONI

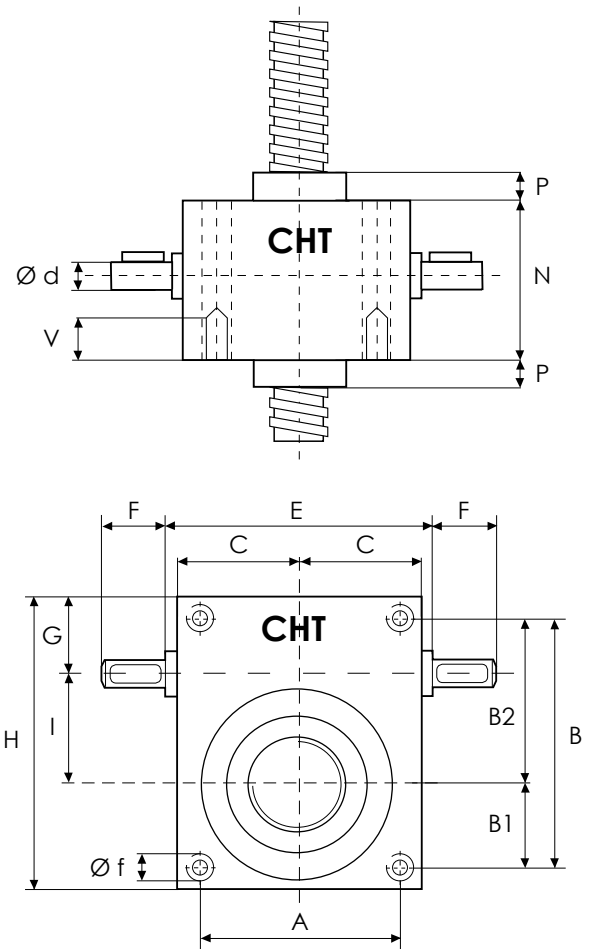




SERIE CHS 8 TS · VITE TRASLANTE

GRANDEZZA MARTINETTO CHS 8

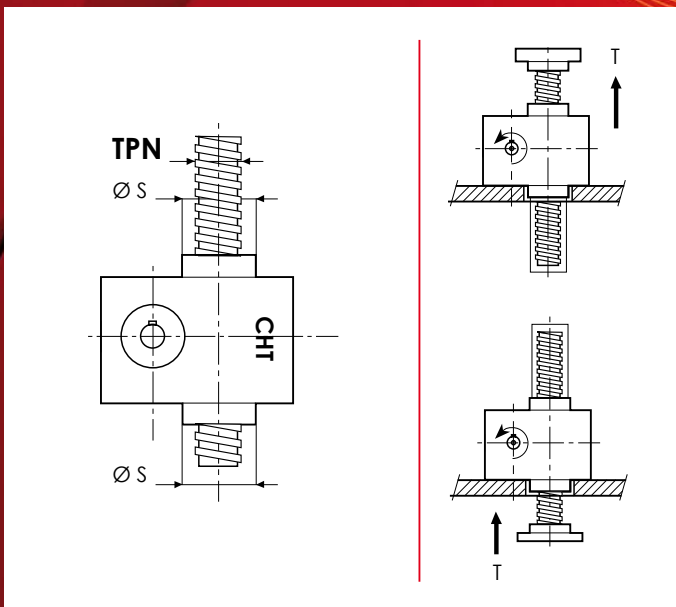
PORTATA	daN (Kg)	25000
VITE TPN	DIAMETRO mm PASSO mm	80 10
RIDUZIONE	VELOCE NORMALE LENTA	5:1 10:1 30:1
CORSA VITE PER GIRO mm	VELOCE NORMALE LENTA	2 1 0,33
RENDIMENTO	VELOCE NORMALE LENTA	18,5% 17,5% 16%
PESO MARTINETTO (Kg)		54
PESO VITE TPN X 100 mm (Kg)		3,2
MATERIALE CASSA		G25
QUANTITA' LUBRIFICANTE (Kg)		1,5
TIPO LUBRIFICANTE	AGIP GR MU EP2	
TEMPERATURA ESERCIZIO	-5° C +80° C	



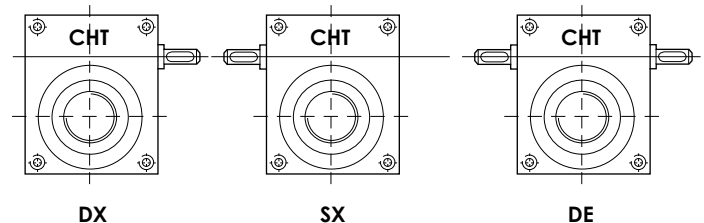
VITE TRASLANTE

00

SERIE CHS 8 TS - 25000 daN · TPN 80x10

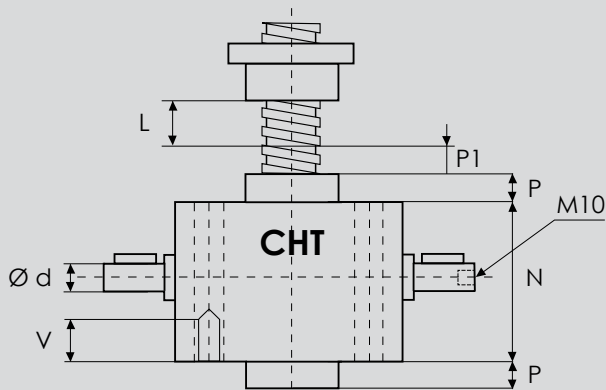


	A	B	B1	B2	C	E	F	G	H
CHS8	180	230	90	140	116	-	60	76	282
	I	N	P	P1	V	Ø d	Ø f	Ø s	TPN
CHS8	90	176	40	30	45	30	M30	120	80x10

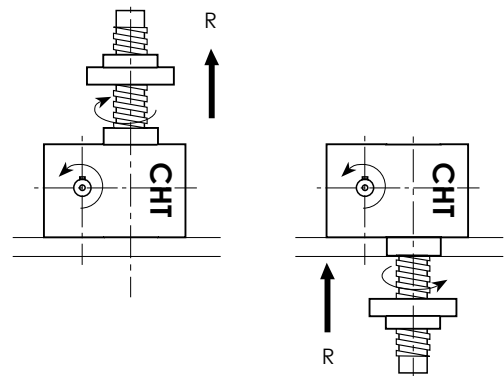
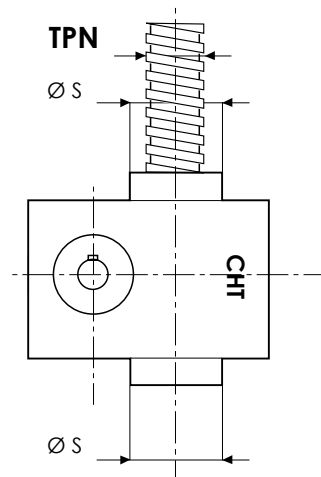
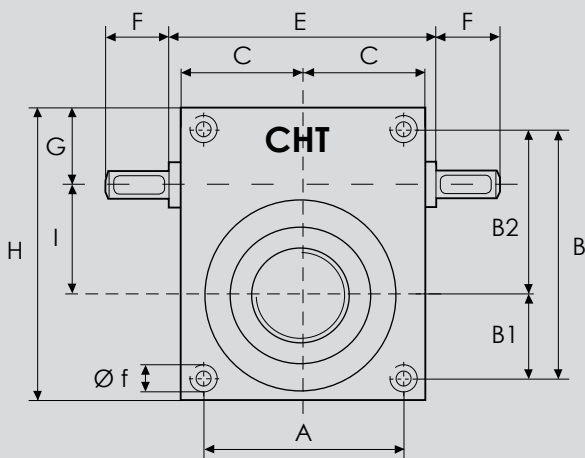




SERIE CHS 8 RS · VITE ROTANTE



L = CORSA

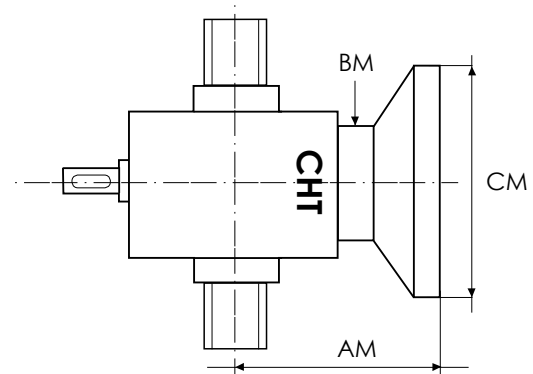
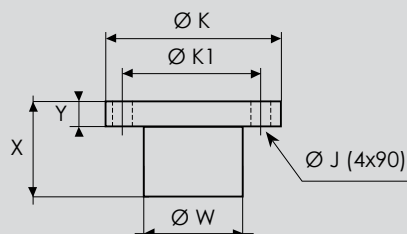


00

VITE ROTANTE

DIMENSIONI PAM FLANGIA CORTA

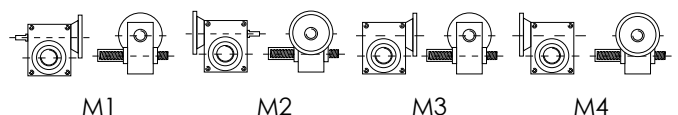
CHIOCCIOLA IN BRONZO



MOTORE	TIPO FLANGIA	CM	AM	BM
GR. 90	B5	200		
GR. 100/112	B5	250	200	130
	B14	160		
GR. 132	B5	300		
	B14	200		

	X	Y	ØW	ØK	ØK1	ØJ
CHS8	110	30	110	190	150	18

CONFIGURAZIONI





CHIARAVALLI Cz a.s.
Průmyslová 2083
59401 Velké Meziříčí
Česká republika
Tel. +420 566 502 030
www.chiaravalli.cz



CHIARAVALLI POLSKA Sp. z o.o.
ul. Polna 133
87 - 100 Toruń
Polska
Tel. + 48 56 623 30 00
www.chiaravalli.pl



Via per Cedrate, 476
21044 Cavarina con Premezzo (VA) · Italy
Tel. +39 0331 214 511
Fax +39 0331 218 175

www.chiaravalli.com
chiaravalli@chiaravalli.com



Localizzazione satellitare: coordinate N 45° 41.394 · E8° 48.726